



Towing and Suspension Solutions

Break Away Switch

part number 650898

Installation Instructions

All specifications are subject to change without notice.

ROADMASTER, Inc. 6110 NE 127th Ave. Vancouver, WA 98682 800-669-9690 Fax: 360-735-7575 www.roadmasterinc.com

Note: the purpose of this kit is to replace a break away switch on an existing break away system. It is assumed that the break away wiring harness has been routed from the front of the vehicle and through the firewall, and that the break away cable has been reserved from the original system.

1. Using the included bolt and nut (Figure 1), mount the break away switch (Figure 1) at the front of the vehicle, on the driver's side. Choose an area you can easily reach, with a surface of sufficient strength to hold the switch firmly in place, so that the break away pin (Figure 1) will pull freely from the switch. Mount the switch in a horizontal position, with the break away pin facing toward the motorhome.

Ensure that the break away pin can be pulled freely away from the towed vehicle, without any obstructions.



WARNING

Do not attach the break away switch to the tow bar or the tow bar bracket. If the tow bar or bracket fails, the break away switch will separate with it, preventing the break away system from activating. If the towed vehicle separates, the brakes will not be applied, which may cause property damage, personal injury or even death.

2. At the front of the vehicle, attach the two-prong connector at the end of the wiring harness to the two-prong connector on the break away switch.

3. Follow the instructions in the owner's manual to connect the wiring harness to the supplemental braking system.

To connect the break away cable...

1. At the towed vehicle, clip the steel break away cable to the large ring on the break away pin, then clip the other end of the steel break away cable to the rear of the motorhome, close to the center.

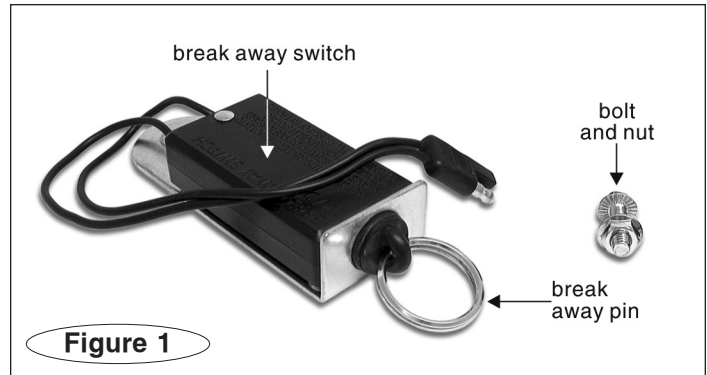
2. Periodically, test the break away system – with the supplemental braking system connected, pull the break away pin out of the break away switch. The air cylinder on the supplemental braking system will extend when the pin is pulled. Insert the pin back into the switch. The air cylinder will retract.



WARNING

When connecting the break away system, always check the following:

• **Connect the cable at the rear of the motorhome, close to the center. Connecting the cable toward either side of the motorhome may cause the break away**



pin to be pulled when the motorhome turns, activating the break away system.

• **Be certain there are no obstructions which would prevent the cable from pulling freely away from the break away switch. Do not wrap the cable around anything – doing so could keep the cable from pulling the break away pin, preventing the system from activating in a break away.**

- **Make certain the cable is the correct length...**
 - **The cable must be long enough to prevent the break away pin from being pulled out during normal towing – make certain there is enough slack to allow for sharp turns. If the cable is not long enough, the break away system will activate even though the towed vehicle has not detached.**
 - **The break away cable must be longer than the safety cables. This will prevent the break away system from activating if a component of the towing system has separated, but the towed vehicle is still held by the safety cables.**
 - **Make certain that the cable is not too long – it should not hang down to the extent that it may catch on obstructions, or drag on the ground. This much slack could allow the cable to be pulled inadvertently, activating the break away system.**
 - **If you have a telescoping tow bar, allow enough slack for the tow bar arms to be fully extended.**
 - **Leave the break away pin in place, even when the vehicle is not being towed. If the pin is not in place when the supplemental braking system is connected, the break away system will be activated – the air cylinder will extend and will not retract.**

Failure to follow these instructions may cause property damage, personal injury or even death.