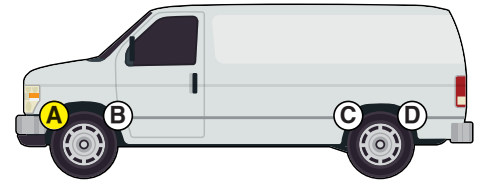




Installation Instructions



Factory Replacement Front Anti-Sway Bar for E350/450

part #1139-176

1-3/8" diameter

Thank you for purchasing this anti-sway bar kit. Please read through these instructions before installation.



INTRODUCTION

Thank you for purchasing this anti-sway bar kit. This kit is designed to improve the handling characteristics of your vehicle by reducing the body roll and balancing the weight transfer during cornering. The anti-sway bar kit is engineered for long life and trouble-free performance. For maximum suspension control, use this kit along with our shock absorbers.

All the hardware needed for installation is included in this kit. Refer to the PARTS LIST in these instructions to identify the parts.

SUGGESTED TOOLS

The following tools are suggested to complete the installation procedures:

- General hand tools

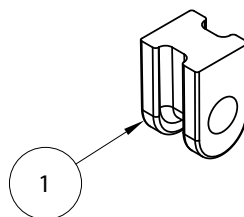
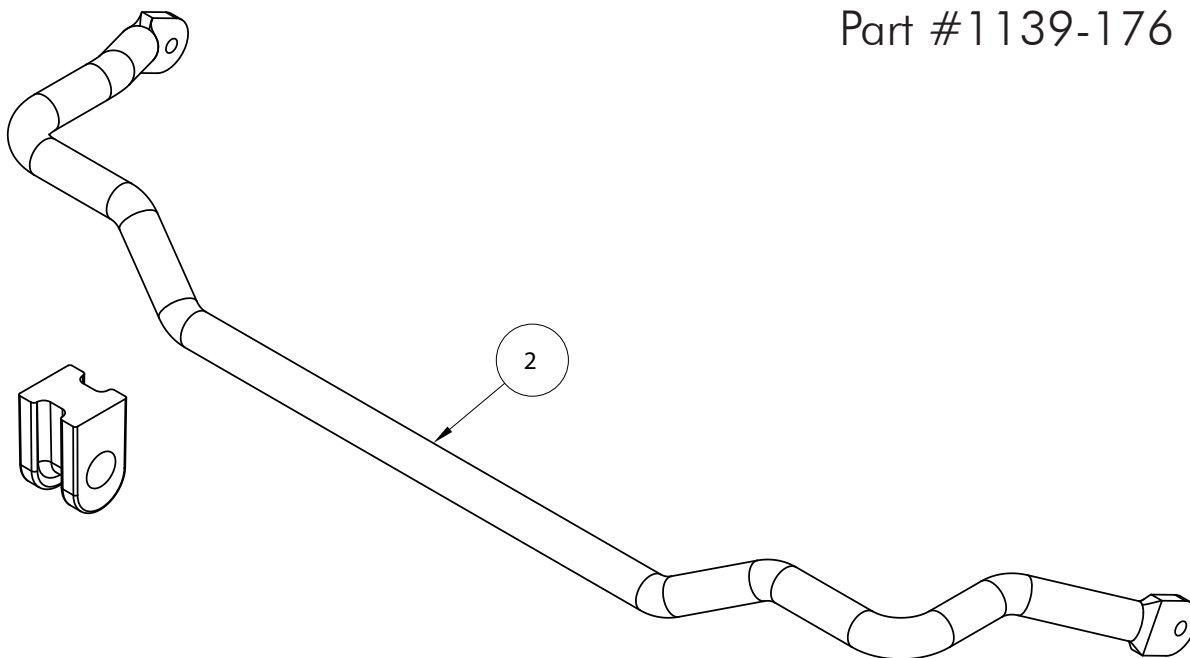
WARNING

Failure to follow these instructions can result in property damage, personal injury or even death.

- If raising the vehicle to install the anti-sway bar, always support the vehicle with jack stands at both frame rails or at the rear axle before working underneath. Ensure that the jack stands are securely positioned, and are rated at or above the weight of the vehicle.
- The installer must read the instructions and use all bolts and parts supplied. Use only the parts supplied by ROADMASTER to install this kit.
- Minor modifications are sometimes necessary due to slight vehicle variations, even for the same year, make and model.
- Regardless of year, make and model, a wide range of options for specific applications may or may not interfere with the installation. It is the installer's responsibility to make certain that equipment is not damaged once the suspension solution travels through the full range of motion. Failure to ensure adequate clearance could result in non-warranty property damage, personal injury or even death.
- If running changes were made by the manufacturer after this kit was designed, there may be weldments, braces, gussets, or other structural items which interfere with the installation. It is the installer's responsibility to allow for these running changes without sacrificing the structural integrity of the anti-sway bar. Failure to securely fasten the anti-sway bar could result in property damage, personal injury or even death.
- ROADMASTER will not be responsible for any damage or injury resulting from any modification or alteration.
- Check ALL the fasteners for tightness before and after road testing the vehicle.
- Do not use this document for custom fabrication, as it may not show all parts or structural components.
- Do not use an air impact wrench when re-installing bolts, as stripped threads may result.
- This anti-sway bar is only warranted for the original installation. Installing a used anti-sway bar on another vehicle is not recommended and will void the warranty.

PARTS LIST

Part #1139-176



ITEM.....	QTY.....	DESCRIPTION	PART
1.....	2.....	BUSHING	205243-10
2.....	1	ANTI-SWAY BAR.....	580246-00
3.....	1	LOCTITE.....	200544-00
4.....	1	AQUALUBE	400011-30

INSTALLATION

The following instructions must be followed in the order listed to ensure a proper installation and to preserve the ROADMASTER warranty.

1. Unload the suspension.

Before beginning this installation, unload the suspension to allow safe access to the underside of the vehicle. You can use a hoist or jack stands to accomplish this.

WARNING

If raising the vehicle to install the anti-sway bar, always support the vehicle with jack stands at both frame rails or at the rear axle before working underneath. Ensure that the jack stands are securely positioned, and are rated at or above the weight of the vehicle.

2. Remove the front factory anti-sway bar.

Remove the 14mm x 2.0 front bushing clamp bolt, as well as the 10mm x 1.5 rear bushing clamp bolts. Retain the bolts and bushing clamps for reinstallation in step 4. Remove the factory anti-sway bar from its endlinks, leaving the endlinks in place.

3. Attach the new anti-sway bar to the factory endlinks.

Leave the nuts loose for now and let the bar hang down.

4. Install the bushings and clamps on the anti-sway bar.

Grease the supplied urethane bushings (Figure 1) and on each side, attach the replacement bar to the chassis using the factory bolts and clamps you retained from step 2. Re-install the 14mm x 2.0 front bushing clamp bolt using Loctite Red®.

Now, install the 10mm x 1.5 rear bushing clamp bolt using Loctite Red. Torque the front bolt to 30 ft./lbs. and the rear bolt to 18 ft./lbs. (Figure 2).

Then, tighten the endlink bolts to 60 ft./lbs., using Loctite Red on the locking flange nuts. Use a 17mm wrench on the wrench flat of the studs.

Caution: If you do not torque the endlink nuts to 60 ft./lbs. and use Loctite on the nut, it could cause non-warranty damage to the endlink. Under no circumstances should you use air tools to torque the endlink bolts and nuts.

5. Tighten, test drive and re-adjust as necessary.

Make certain all connections are tightened.

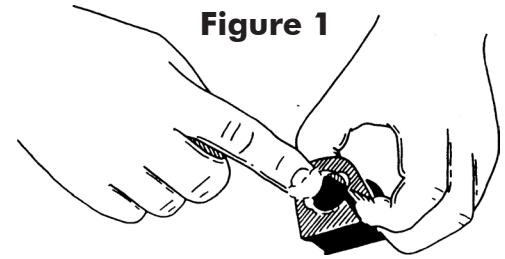


Figure 1

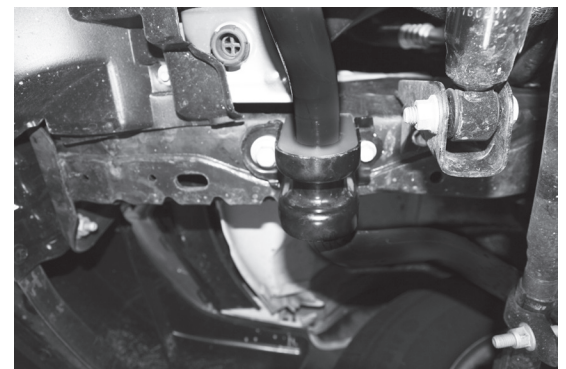


Figure 2