

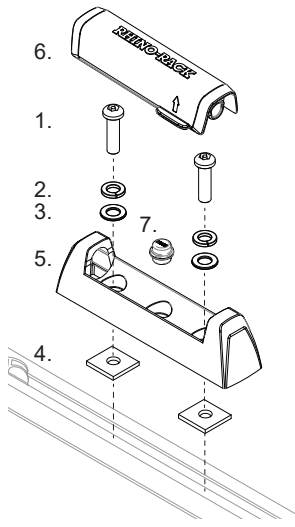


# RHINO-RACK

**CONTROLLED**

QMFK02

Item	QMFK02	Qty	Part No.
1	M6 x 16 Button Head Screw	8	B061
2	M6 Spring Washer	8	W004
3	M6 x 12.5mm Flat Washer	8	W003
4	M6 x 24mm x 21mm x 4mm Nut	8	N057
5	Quick Mount Leg Base	4	M701
6	Quick Mount Leg Base Cover	4	M702
7	Track Leg Grommet	4	M982
8	Instructions	1	R581



Issue: 02

Document No: R581

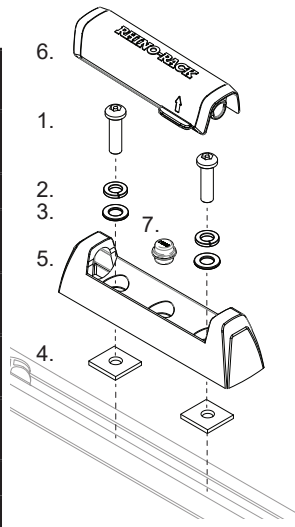


# RHINO-RACK

**CONTROLLED**

QMFK02

Item	QMFK02	Qty	Part No.
1	M6 x 16 Button Head Screw	8	B061
2	M6 Spring Washer	8	W004
3	M6 x 12.5mm Flat Washer	8	W003
4	M6 x 24mm x 21mm x 4mm Nut	8	N057
5	Quick Mount Leg Base	4	M701
6	Quick Mount Leg Base Cover	4	M702
7	Track Leg Grommet	4	M982
8	Instructions	1	R581



Issue: 02

Document No: R581

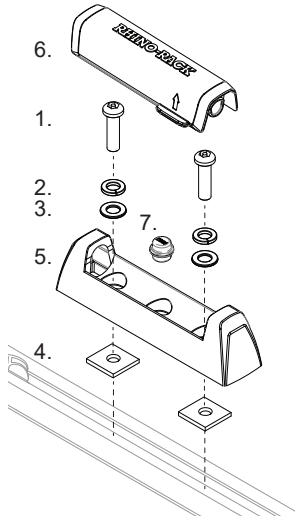


# RHINO-RACK

**CONTROLLED**

QMFK02

Item	QMFK02	Qty	Part No.
1	M6 x 16 Button Head Screw	8	B061
2	M6 Spring Washer	8	W004
3	M6 x 12.5mm Flat Washer	8	W003
4	M6 x 24mm x 21mm x 4mm Nut	8	N057
5	Quick Mount Leg Base	4	M701
6	Quick Mount Leg Base Cover	4	M702
7	Track Leg Grommet	4	M982
8	Instructions	1	R581



Issue: 02

Document No: R581

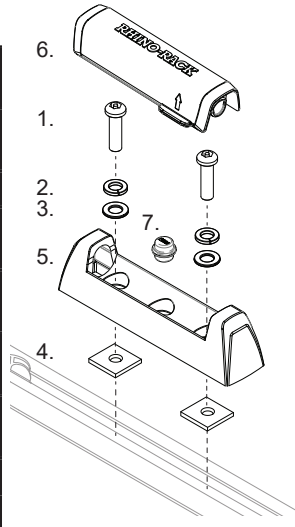


# RHINO-RACK

**CONTROLLED**

QMFK02

Item	QMFK02	Qty	Part No.
1	M6 x 16 Button Head Screw	8	B061
2	M6 Spring Washer	8	W004
3	M6 x 12.5mm Flat Washer	8	W003
4	M6 x 24mm x 21mm x 4mm Nut	8	N057
5	Quick Mount Leg Base	4	M701
6	Quick Mount Leg Base Cover	4	M702
7	Track Leg Grommet	4	M982
8	Instructions	1	R581



Issue: 02

Document No: R581

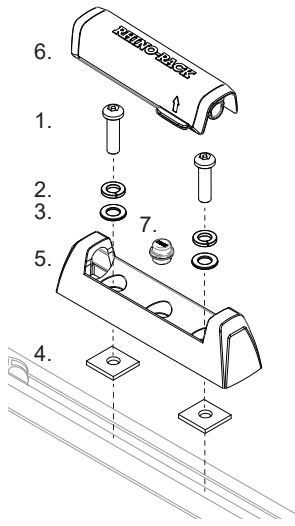


# RHINO-RACK

**CONTROLLED**

QMFK02

Item	QMFK02	Qty	Part No.
1	M6 x 16 Button Head Screw	8	B061
2	M6 Spring Washer	8	W004
3	M6 x 12.5mm Flat Washer	8	W003
4	M6 x 24mm x 21mm x 4mm Nut	8	N057
5	Quick Mount Leg Base	4	M701
6	Quick Mount Leg Base Cover	4	M702
7	Track Leg Grommet	4	M982
8	Instructions	1	R581



Issue: 02

Document No: R581

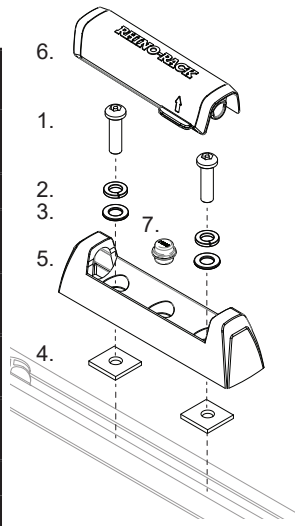


# RHINO-RACK

**CONTROLLED**

QMFK02

Item	QMFK02	Qty	Part No.
1	M6 x 16 Button Head Screw	8	B061
2	M6 Spring Washer	8	W004
3	M6 x 12.5mm Flat Washer	8	W003
4	M6 x 24mm x 21mm x 4mm Nut	8	N057
5	Quick Mount Leg Base	4	M701
6	Quick Mount Leg Base Cover	4	M702
7	Track Leg Grommet	4	M982
8	Instructions	1	R581



Issue: 02

Document No: R581