

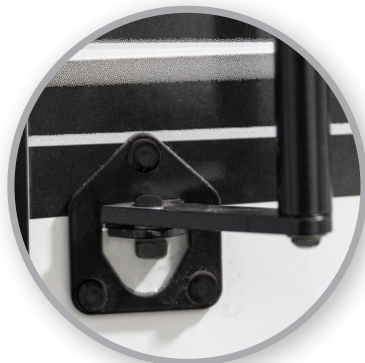
LATCH EXTENDER



The Latch Extender offers additional leverage when getting into your RV.

The longer handle and larger gripping surface allows you to easily open your door without the hassle of going up and down steps.

- Attaches to your RV door lock
- Extended handle provides a larger gripping surface
- Makes it easier to reach and open your door from the ground
- Reduces unnecessary trips up and down your entry steps



Scan the QR code to watch the qualifier and installation video.

SP54-200



Above. Beyond. Always.

LATCH EXTENDER

QUALIFIER



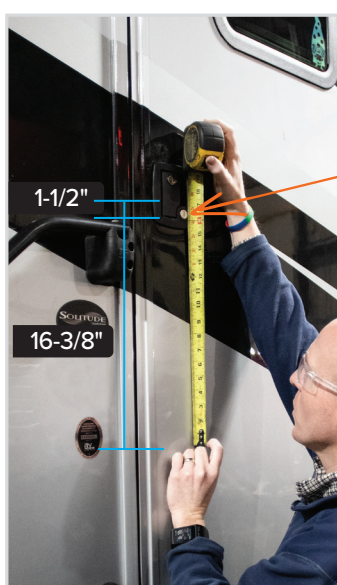
WARNING:

- Using the Latch Extender increases the leverage on your RV door latch. Make sure to unlock both the dead bolt and door latch prior to using the Latch Extender. Failure to do so could result in damage to the locks and/or latch and could lead to possible injury due to loss of balance or fall.
- The Latch Extender cannot be used on motorized vehicles.
- The Latch Extender is not compatible with glass doors.

Note: The Latch Extender should not be used to close the door.

STEP 1

1-1/2" clearance above the center of the dead bolt lock and 16-3/8" clearance below the dead bolt lock is required for the Latch Extender to fit.



Dead Bolt Lock

1-1/2"

16-3/8"



Outer edge of the Latch Extender

5-3/4"

STEP 2

A total width of 5-3/4" clearance is needed from the edge of the door to the outer edge of the Latch Extender.



2-5/8" off the face of the latch

2-5/8"

3-1/2"

3-1/2" off the door

STEP 3

2-5/8" off the face of the latch and 3-1/2" off the door are required to ensure that when the door is open, the Latch Extender doesn't collide with the sidewall of the RV.



Above. Beyond. Always.

574-293-1581 | MORryde.com



Latch Extender
Qualifier & Installation
Instructions