



DURA FAUCET®

**DF-SA184 - RV Exterior Utility Spray Dock with Quick
Connect**



MAINTENANCE AND CLEANING

Cleaning Tips: The finish on your product is designed to retain its beautiful sheen for years. To maintain the original look of the finish, a little care and caution should be used. We recommend the use of mild soap and water to clean the product.

THE USE OF ABRASIVE CLEANERS MAY SCRATCH THE FINISH OR CAUSE OTHER DAMAGE.

RECOMMENDED TOOLS AND MATERIALS

- ◆ Screwdriver
- ◆ Tape Measure
- ◆ Wrench

BEFORE YOU BEGIN

There are a variety of things to do before installing any new plumbing system into your RV. Before you begin work make sure you:

- ◆ Shut off the main water supply
- ◆ Cover your drain to prevent loss of parts
- ◆ Observed any local plumbing codes
- ◆ Inspect fixture for damage - Replace as necessary

* Dura Faucet reserves the right to make any revisions in the design of products without notice.

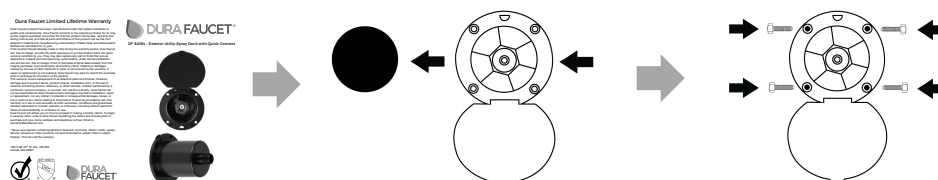
INSTALLATION

1 New Spray Dock Preparation

Completely shut off the water supply to the spray dock. Remove the old spray dock box by disconnecting it from the water supply and unscrewing it from the RV. If installing this for the first time a 2.65-inch circular hole will need to be cut out of the RV exterior to make space.

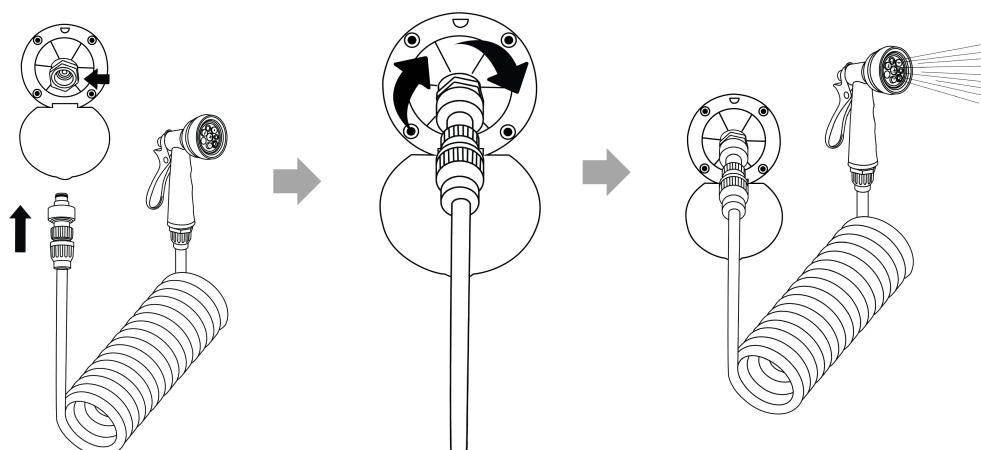
2 Install Spray Dock Box

Pull out the water supply line slightly from the hole and attach it to the back of the spray dock. Once done, feed the spray dock through the hole in the RV exterior and mount securely by tightening all 4 screws. With all connections, plumber's tape may be used to help prevent leaking.



3 Turn on Water Supply and Check for Leaks

Once installation of spray dock is complete, turn the water supply on and allow water to run for at least 30 to 60 seconds. While water is running, check for leaks around all connections of the spray dock both inside and outside. Once done you can start enjoying your new Dura Faucet spray dock.



SPEC DRAWING / PARTS

