



**DURA FAUCET®**

**DF-SA150 - RV Single Lever Shower Faucet**



## **MAINTENANCE AND CLEANING**

Cleaning Tips: The finish on your product is designed to retain its beautiful sheen for years. To maintain the original look of the finish, a little care and caution should be used. We recommend the use of mild soap and water to clean the product.

THE USE OF ABRASIVE CLEANERS MAY SCRATCH THE FINISH OR CAUSE OTHER DAMAGE.

## **RECOMMENDED TOOLS AND MATERIALS**

- ◆ Adjustable wrench
- ◆ Plumber's tape

## **BEFORE YOU BEGIN**

There are a variety of things to do before installing any new plumbing system into your RV. Before you begin work make sure you:

- ◆ Shut off the main water supply
- ◆ Cover your drain to prevent loss of parts
- ◆ Observed any local plumbing codes
- ◆ Inspect fixture for damage - Replace as necessary

\* Dura Faucet reserves the right to make any revisions in the design of products without notice.

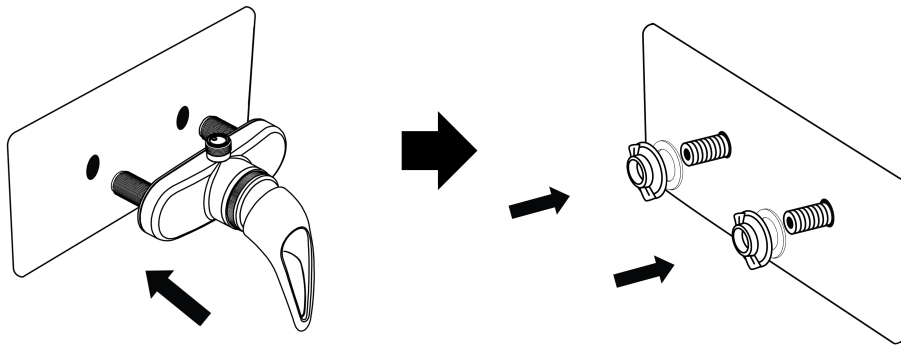
## INSTALLATION

### 1 New Faucet Preparation

Turn the water to the RV off before installing. Remove the existing fixture.

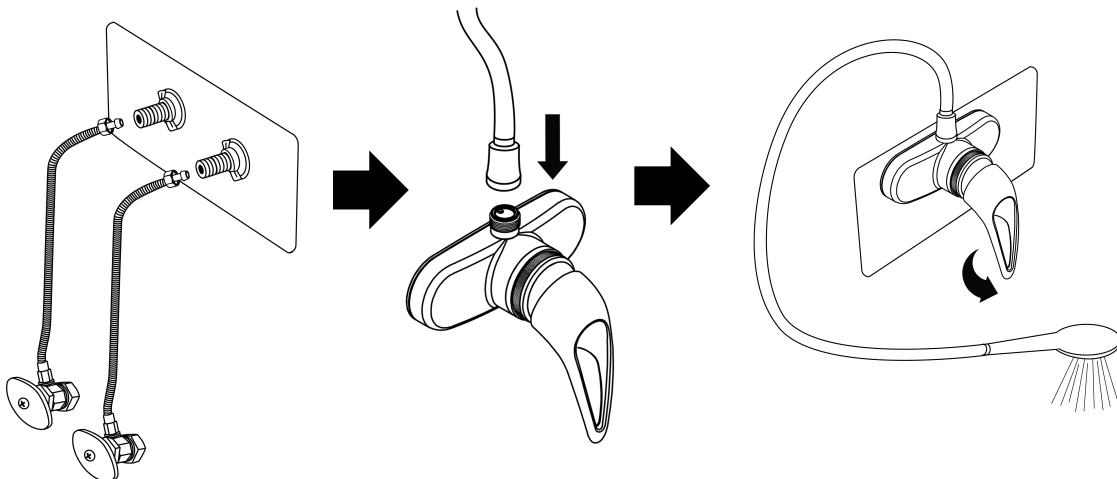
### 2 Install Faucet to Water Supply Tubes

Place the flat side of the sealing gasket against the wall, and then insert the faucet inlet tubes through the gasket into the wall. Position the faucet on the wall. You may need to remove an access panel to access the faucet mounting nuts. Once inserted, tighten the mounting nuts from behind the wall. Then, connect the water supply lines from the RV to the inlet tubes of the faucet. As you lace the faucet, hot water should be on your left, and cold water on your right. **Note:** Hand tighten the nuts over the washer and then tighten ¼ turn with a wrench. Overtightening the nut can cause leaking.

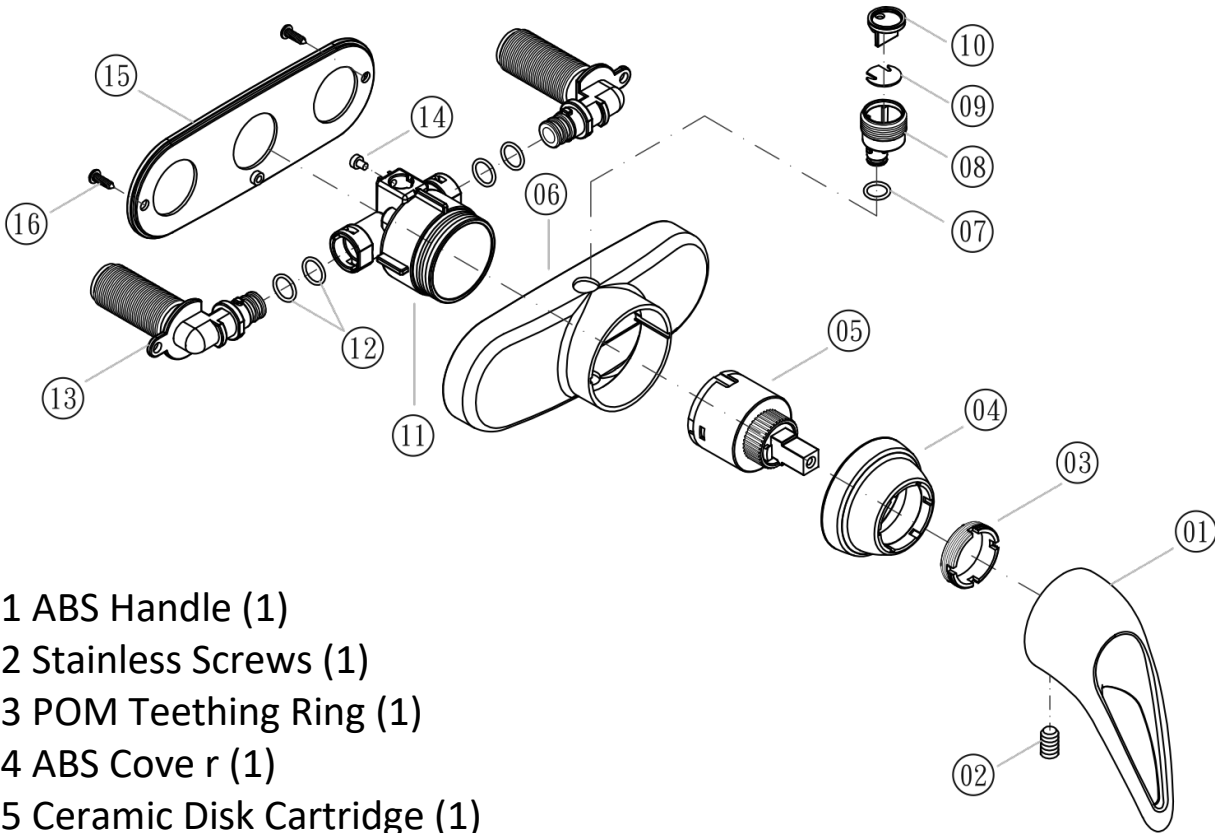


### 3 Attach Sprayer to Diverter and Flush Lines

Turn the water to the RV back on and check for leaks at the supply line connections. Attach the sprayer to the faucet top. Turn the hot and cold water on for 30 to 60 seconds to remove any potential debris from the lines. You can now enjoy your Dura Faucet.



## SPEC DRAWING / PARTS



- 1 ABS Handle (1)
- 2 Stainless Screws (1)
- 3 POM Teething Ring (1)
- 4 ABS Cove r (1)
- 5 Ceramic Disk Cartridge (1)
- 6 ABS Panel (1)
- 7 Rubber O-Ring (1)
- 8 ABS Shell (1)
- 9 Rubber Pellicle (1)
- 10 ABS Shell (1)
- 11 POM Three Direct Links (1)
- 12 Rubber O-Ring (4)
- 13 POM Connector (2)
- 14 POM Stopper (1)
- 15 PP Bottom (1)
- 16 Stainless Screws (2)