



DURA FAUCET®

DF-PL720 - RV Bathroom Faucet



MAINTENANCE AND CLEANING

Cleaning Tips: The finish on your product is designed to retain its beautiful sheen for years. To maintain the original look of the finish, a little care and caution should be used. We recommend the use of mild soap and water to clean the product.

THE USE OF ABRASIVE CLEANERS MAY SCRATCH THE FINISH OR CAUSE OTHER DAMAGE.

RECOMMENDED TOOLS AND MATERIALS

- ◆ Adjustable Wrench
- ◆ Plumber's Tape

BEFORE YOU BEGIN

There are a variety of things to do before installing any new plumbing system into your RV. Before you begin work make sure you:

- ◆ Shut off the main water supply
- ◆ Cover your drain to prevent loss of parts
- ◆ Observed any local plumbing codes
- ◆ Inspect fixture for damage - Replace as necessary

* Dura Faucet reserves the right to make any revisions in the design of products without notice.

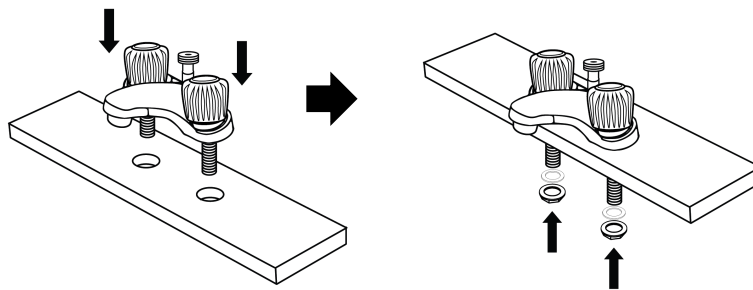
INSTALLATION OF THE FAUCET

1 New Faucet Preparation

Shut off the water supply and remove the old faucet by disconnecting from the supply tubes under the sink, and unscrewing the faucet from the countertop by removing mounting nuts. Clean the sink top surface in preparation for the new faucet.

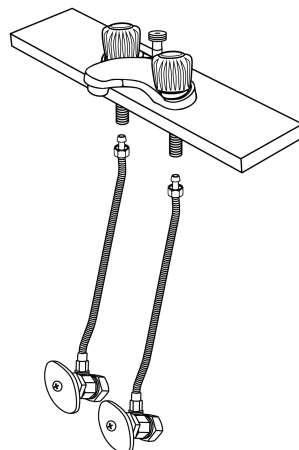
2 Install Faucet on Sink Top

Place the base plate in position on the sink top and screw nuts and washers upward from under the sink onto the faucet connectors. Next, using your hands **ONLY**, tighten the nuts alternating until they are nearly flush with the underside of the sink top. Then, align the faucet as desired. While maintaining set alignment, tighten down lock nuts to lock faucet into place.



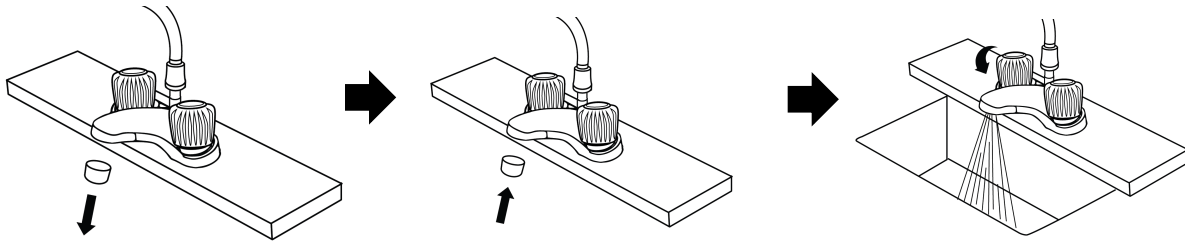
3 Install Faucet Hoses

Slide water supply hose into faucet's connections, and slide nut up to a flush position. Hose will go partially into faucet's connection. Carefully hand tighten nuts, then use a wrench to hold the hoses securely into place. Plumbers tape may be used to help prevent leaks.

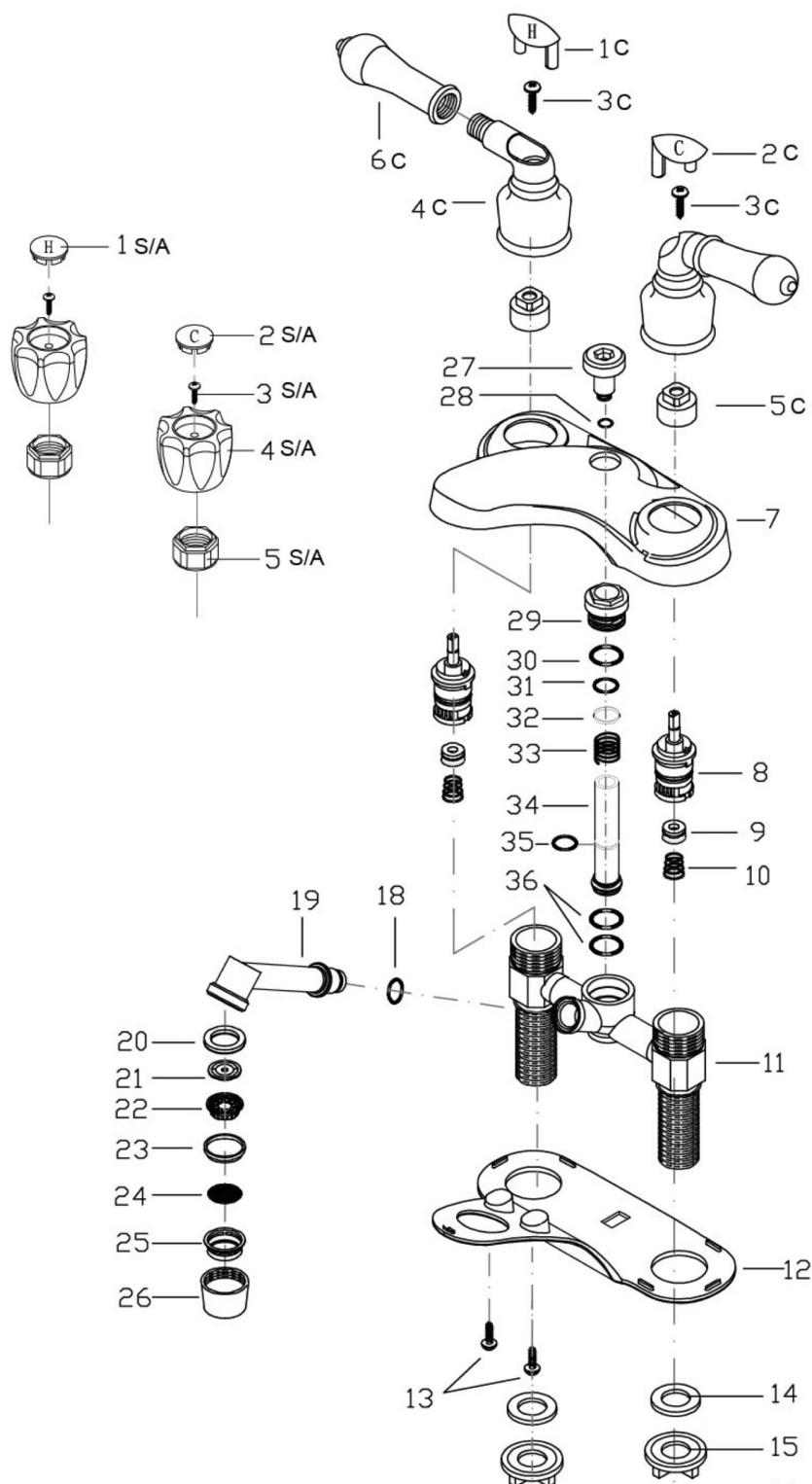


4 Flush Lines

Once installation of the hoses is complete, remove the Attach the sprayer (not included). Turn the water supply on and allow both hot and cold water to run for at least 30 to 60 seconds each. While water is running, check for leaks around and under the sink. Once done remove the aerator and do the same. Replace aerator and start enjoying your new Dura Faucet.



SPEC DRAWING / PARTS



- 1S/A** Acrylic/Al H-Button (1)
- 1C** ABS Cover(H) (1)
- 2S/A** Acrylic/Al C-Button (1)
- 2C** ABS Cover(C) (1)
- 3S/A** Stainless Steel Handle Screw (2)
- 3C** Stainless Handle Screw(2)
- 4S/A** ABS Base (2)
- 4C** ABS Base (2)
- 5S/A** ABS Nut (2)
- 5C** ABS Nut (2)
- 6C** ABS Handle (2)
- 7** ABS Escutcheon (1)
- 8** Pom/Rubber/Stainless Mandrel (2)
- 9** Rubber Washer (2)
- 10** Stainless Spring (2)
- 11** Pom/Rubber Body (1)
- 12** PP Base Plate (1)
- 13** Stainless Screw (2)
- 14** Rubber Washer (2)
- 15** ABS Mounting Nut (2)
- 16** Rubber Washer (2)
- 17** ABS Coupling Nut (2)
- 18** Rubber O-Ring (1)
- 19** ABS Outlet (1)
- 20** Rubber Washer (1)
- 21** POM Flow Restrictor (1)
- 22** POM Filter Nut (1)
- 23** POM Ring (1)
- 24** Stainless Filter (1)
- 25** POM Filter Seat (1)
- 26** ABS Aerator Nut (1)
- 27** POM Silter (1)
- 28** Rubber O-Ring (1)
- 29** POM Seat (1)
- 30** Rubber O-Ring (1)
- 31** Rubber O-Ring (1)
- 32** POM Ring (1)
- 33** Stainless Spring (1)
- 34** POM Pole (1)
- 35** Rubber O-Ring (1)
- 36** Rubber O-Ring (1)