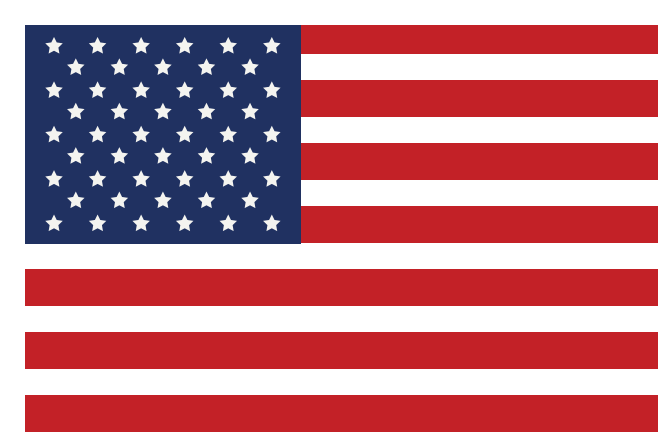




# BLUE OX

WD HITCHES • MOTORHOME MOUNT TOW BARS • BASEPLATES • BRAKES • TOWING ACCESSORIES



Products Guide

[blueox.com](http://blueox.com)

# Contents

Company History	4
Weight Distributing Hitches	5
Hitch Accessories	6
Recreational Tow Bars	7
Baseplates, Fuse Bypass Switches, Rise/Drops	9
Dinghy Tow Brake/Patriot	10
Flat Towing Accessories	11
Wiring Kits & Cables	12
Mad-Ramps	13
Premiere Partners	14
Displays	15
Blue Ox Sales Team	16
Part Numbers	17

# Innovation is Our Business

Blue Ox exists to make towing easier, safer, and more convenient. I believe in our company's and our industry's capacity to transform and improve people's lives with innovative products helping them experience the wonder of travel and the great outdoors.

We are a fourth-generation family-owned company started in 1925 by my great-grandfather on the family farm, just outside of Pender, Nebraska, the current site of our manufacturing plant. My great-grandfather began this company by solving a problem, keeping pests off of livestock, with the invention of automatic cattle and hog oilers, eventually introducing grain roller mills which we still manufacture alongside Blue Ox towing products in our Pender plant.

In the 1980s, my father began to diversify into towing products for motorhomes and trailers. Beginning with the KarTote trailer allowing our customers to tow their cars behind their motorhomes. In the 1990s we started manufacturing tow bars for the recreational and commercial markets. Blue Ox permanently changed recreational towing with the invention of the receiver mount tow bar in 1994, and the removable tab baseplate in 1997. We continue to innovate with the introduction of non-binding latches and recreational tow bars that tow up to 15,000 lbs.

As the new century began, Blue Ox moved into the design and manufacture of weight distributing hitches, introducing SwayPro™ in 2004. SwayPro is a unique premium hitch that distributes trailer weight, prevents sway before it starts with caster built into in the hitch head, and spring steel bars that augment the suspension of tow vehicle and the trailer.

This year, we have introduced another innovation in weight distribution with the launch of the TrackPro™ hitch. TrackPro provides a premium ride using caster in the hitch head to constantly push the trailer to the center of the tow vehicle, spring steel bars to augment the suspensions of the tow vehicle and trailer, and additional points of friction to manage sway.

We have also purchased Mad-Ramps, a receiver mounted ramp system that easily loads ATVs, UTVs and snowmobiles into the bed of a pickup or flatbed truck. Mad-Ramps are unique in that they fold up and store on the vehicle without having to fit traditional ramps in the truck bed along with your ATV or worry about using a trailer over uneven terrain. With Mad-Ramps a customer may travel anywhere a pickup can go.

As we continue to grow, we are dedicated to investing in our employees and our manufacturing plant. In order to keep up with demand, we have purchased a new BLM flat laser and a BLM tube laser to increase our production capacity. We continue to look for ways to improve our manufacturing processes and to deliver the premium products our shared customers deserve.

The best part of my day is getting to speak to our dealers. Without your input and support, Blue Ox would not be the company it is today. Thank you for being our customer and we look forward to continuing to providing your customers with products that enhance and add value to their lives.



**Mike Hesse**

A handwritten signature in black ink that reads "Mike Hesse". The signature is fluid and cursive, matching the printed name above it.

CEO/Chairman  
Blue Ox, Automatic, Mad-Ramps





## A Weight Distributing Solution for Every Customer



### SwayPro™

#### Sway Prevention

Distributes trailer tongue weight evenly.

Prevents sway by bad roads, wind or weather.

Prevents sway even in rain or snow.

No noises created by friction.

##### Standard Shank

BXW0550	550lbs.
BXW0750	750lbs.
BXW1000	1000lbs.
BXW1500	1500lbs.
BXW2000	2000lbs.

##### 9-Hole Shank

BXW0550-S	550lbs.
BXW0750-S	750lbs.
BXW1000-S	1000lbs.
BXW1500-S	1500lbs.
BXW2000-S	2000lbs.



### TrackPro™

#### Sway Management

Distributes trailer tongue weight evenly.

Manages sway from bad roads, wind or weather.

Caster with additional points of friction.

##### Standard Shank

2" Ball	
BXW0650	600 lbs.
2-5/16" Ball	
BXW0850	800 lbs.
BXW1050	1000 lbs.
BXW1350	1300 lbs.

##### 9-Hole Shank

BXW0851	800 lbs.
BXW1051	1000 lbs.
BXW1351	1300 lbs.

##### Jayco

BXW0853	800 lbs.
BXW1053	1000 lbs.
BXW1353	1300 lbs.



### 2-Point

#### Weight Distribution

Distributes trailer tongue weight evenly.

Built-in friction sway control.

##### 6-Hole Shank

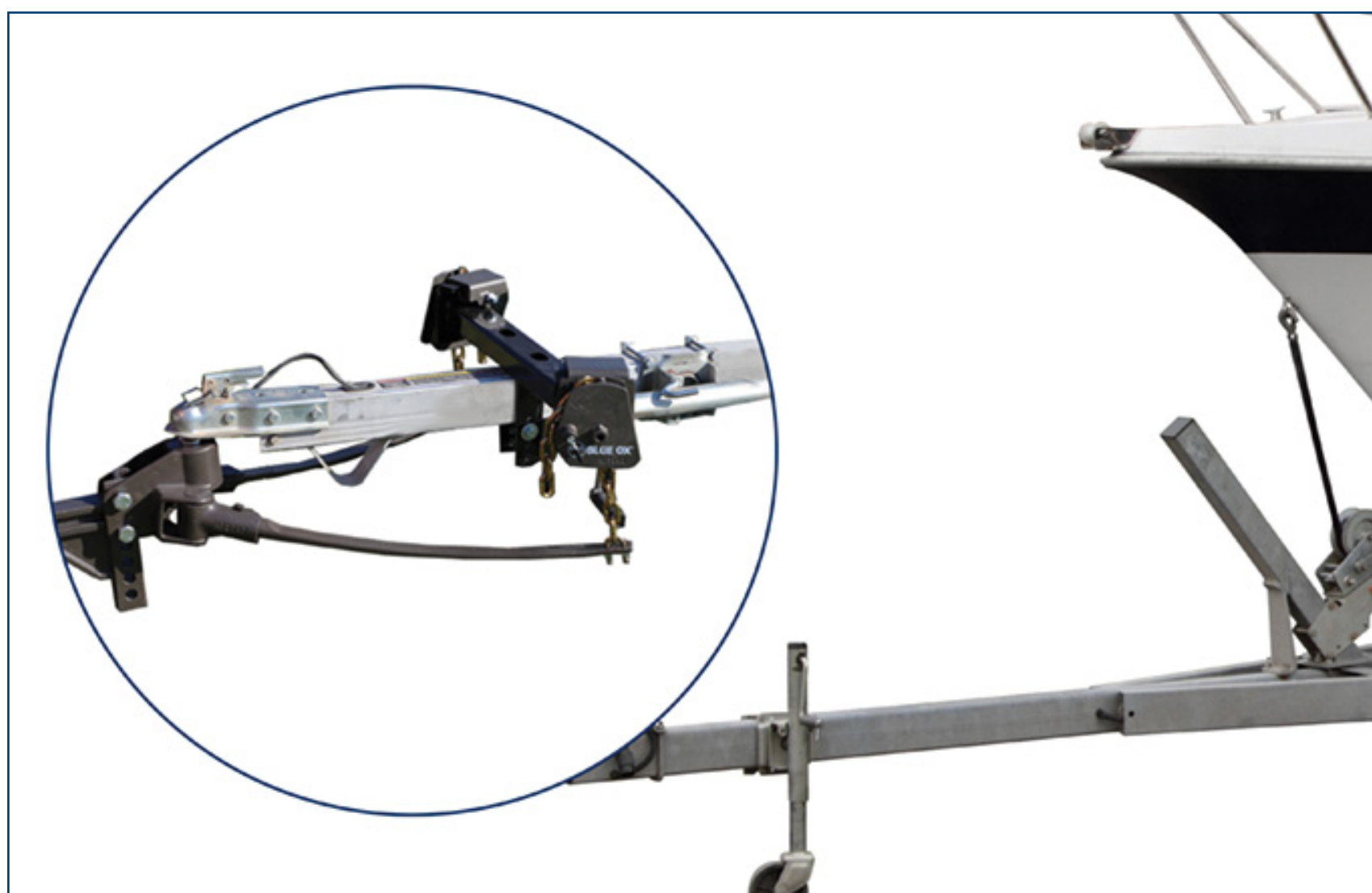
BXW0675	600lbs.
BXW0875	800lbs.
BXW1275	1200lbs.

[Back to Contents Page](#)

# Hitch Accessories

## BXW4023 Pole Tongue Adapter

Boat Trailers  
Portable Ice Fishing Houses



- 2000 lbs. Tongue weight capacity
- Fits tongue widths 2 3/4" - 4 1/2"
- Fits tongue heights 3"-6"
- Attach any over the frame style WD brackets
- Limited lifetime warranty

[Back to Contents Page](#)

## SwayPro Hitch Shanks

BXW4000 7 Hole, Max TRW 20,000 lbs.  
 BXW4002 9 Hole, Max TRW 15,000 lbs.  
 BXW4022 11 Hole, Max TRW 15,000 lbs.  
 BXW4028 9 Hole, 2-1/2" Rec. Max TRW 20,000 lbs.

## SwayPro Spring Bars

BXW4015 350 lb  
 BXW4005 550 lb  
 BXW4006 750 lb  
 BXW4007 1000 lb  
 BXW4008 1500 lb

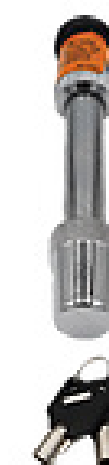
## SwayPro Wrench

BXW4029



## Hitch Locks

BXW8859 Receiver Lock 5/8"  
 BXW88212 Receiver Lock 5/8" X 4



Trailer Coupler Lock  
 BX88351 1-7/8" - 2-5/16"



Universal Kingpin Lock  
 BX88360



## Hitch Immobilizers

BX88224 2" Receiver  
 BX88225 2-1/2" Receiver  
 BX88312 2-1/2" to 2" Receiver

Eliminate jerking, excess movement and rattling between the receiver hitch and the ball mount, tow bar or drop or rise receiver.

Works on any tow bar or weight distributing hitch.

## TrackPro Hitch Shanks

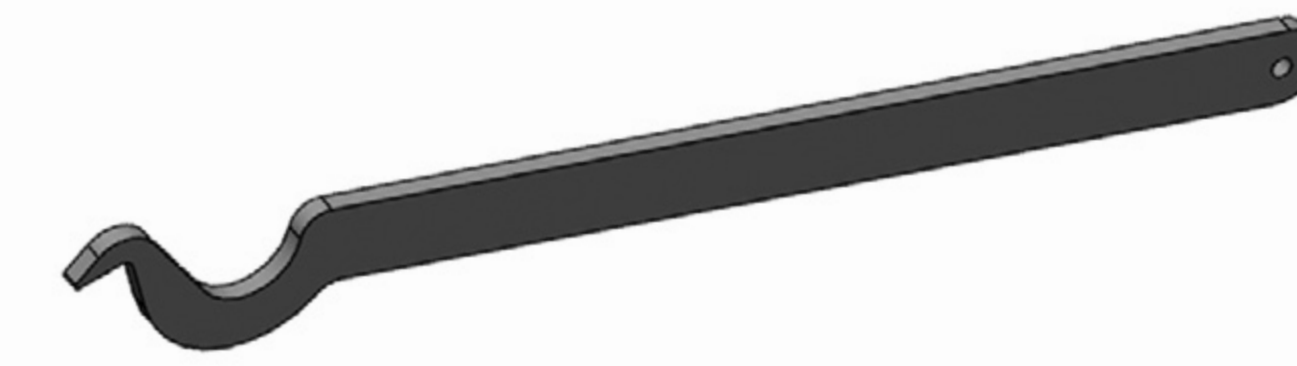
BXW4036 7 Hole, Max TRW 20,000 lbs.  
 BXW4037 9 Hole, Max TRW 15,000 lbs.  
 BXW4038 11 Hole, Max TRW 15,000 lbs.  
 BXW4039 9 Hole, 2-1/2" Rec., Max TRW 20,000 lbs.

## TrackPro Spring Bars

BXW4050 600 lb  
 BXW4040 800 lb  
 BXW4041 1000 lb  
 BXW4042 1300 lb

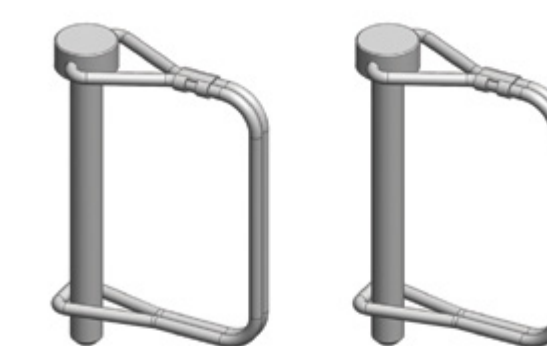
## TrackPro Spring Bar Tool

BXW4043



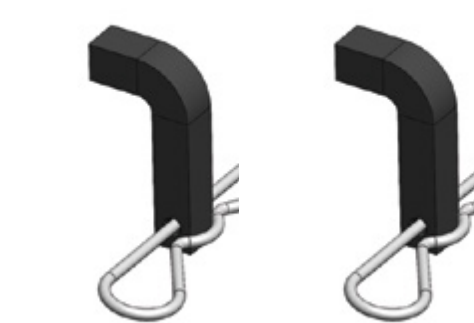
## TrackPro Pin Kit

BXW4047



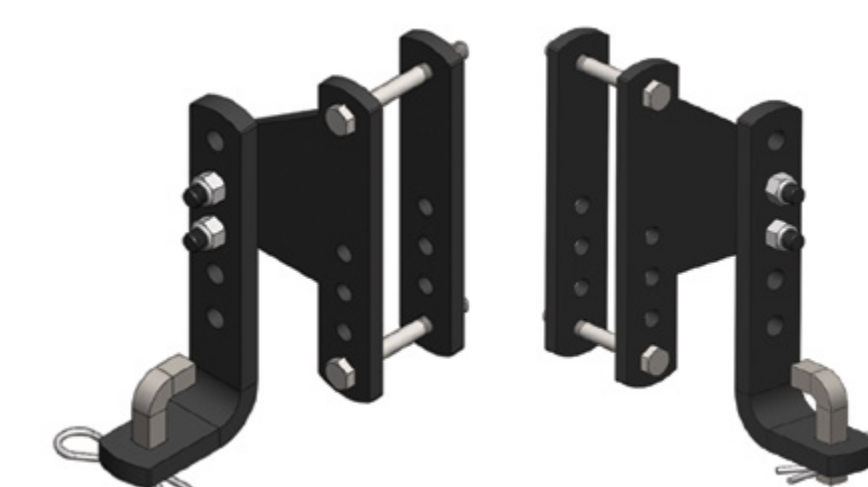
## TrackPro L - Pin Kit

84-0232



## TrackPro L - Bracket

BXW4045 Driver's Side  
 BXW4046 Passenger Side

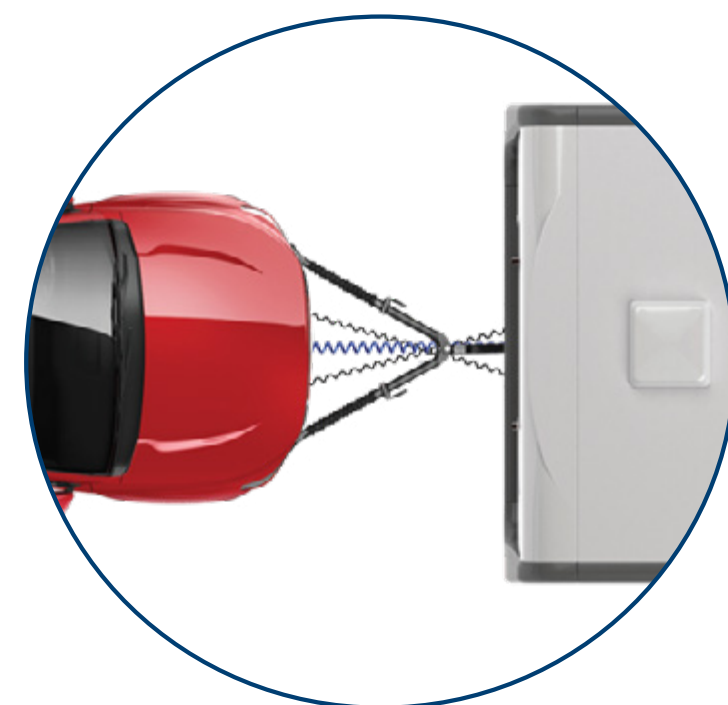




## Blue Ox Tow Bars. Flat Towing Made Easy.



Premium powder coat accents modern coach design.



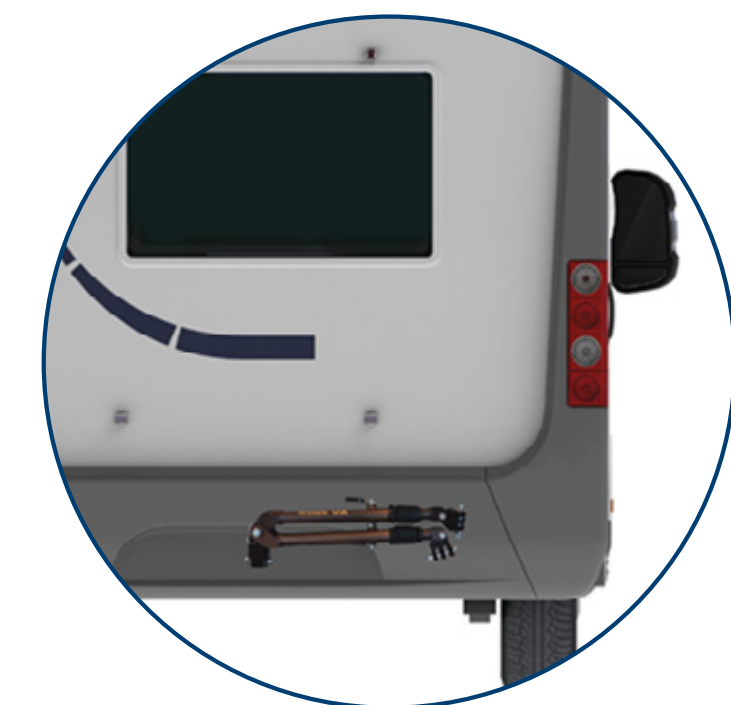
Apollo, Ascent, Avail: 2" longer legs for smoother towing and more room for turns.



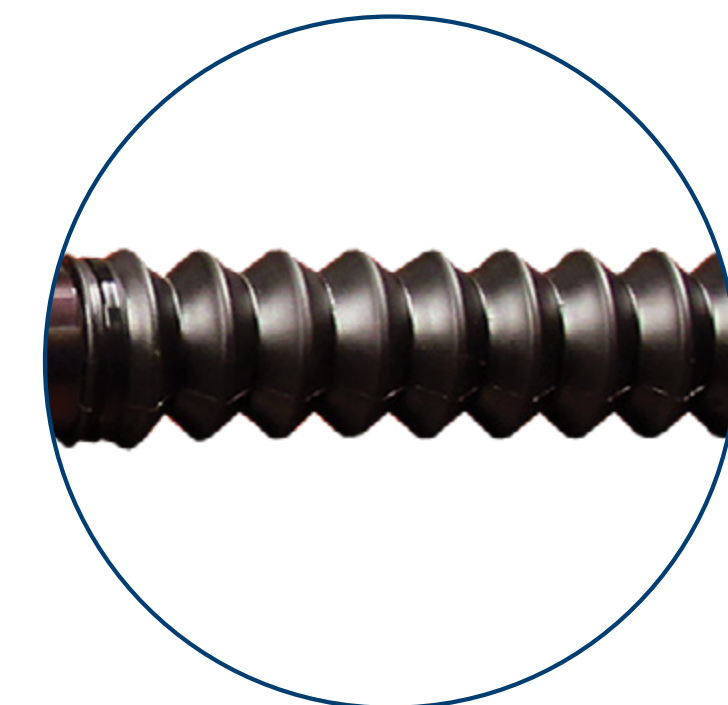
Tow Capacities from 6,500 lbs to 15,000 lbs.



Patented non-binding latches quickly disconnect, even in the most rugged terrain.



Folds up and stores in the motorhome's receiver hitch.



Rubber boots protect the legs from damage caused by road grime.

[Back to Contents Page](#)

# Receiver Mount Tow Bars & Accessory Kits

## Apollo™



BX7470  
All steel construction.  
15,000 lb towing capacity.

## Ascent™



BX4370  
Lightweight aluminum.  
7,500 lb towing capacity.

## Avail™



BX7420  
All steel construction.  
10,000 lb towing capacity.

## Alpha 2™



BX7380  
All steel construction.  
6,500 lb towing capacity.



### 7 to 6 Apollo Accessory Kit

BX88363  
7-6 wire electrical cable  
Bulb and socket kit  
2 Lock Kit, 4-Diode Kit  
Receiver Lock Kit  
Tow bar cover



### 7 to 6 Ascent/Avail Accessory Kit

BX88308  
7-6 wire electrical cable  
Bulb and socket kit  
3 Lock Kit  
4-Diode Kit  
Tow bar cover



### 7 to 6 Accessory Kit

BX88231  
7-6 wire electrical cable  
Bulb and socket kit  
3 Lock Kit  
4-Diode Kit  
Tow bar cover

[Back to Contents Page](#)

# Blue Ox Removable Tab Baseplates Retain the OEM Look of the Towed Vehicle



Baseplate Tabs In



Baseplate Tabs Out



To install tab:  
Insert and  
twist to lock.



To remove tab:  
Pull ring, twist,  
and remove.



## Fuse Bypass Switches

Flip a switch instead of removing fuses.



BX88271



BX88274

- BX88294 ATC/ATO, 2 Circuit Fuse Bypass Switch
- BX88274 High Current Fuse Bypass Switch
- BX88273 Two Mini Fuse Bypass Switch
- BX88272 Mini Fuse Bypass Switch, Long Lead
- BX88271 Mini Fuse Bypass Switch, Short Lead

## Rise/Drop Receivers

Keep your tow bar level within 3"



- BX88128 2" Rise/Drop, 5,000 lbs., 7-3/4" long
- BX88129 4" Rise/Drop, 5,000 lbs., 7-3/4" long
- BX88131 8" Rise/Drop, 5,000 lbs., 11-1/2" long
- BX88132 10" Rise/Drop, 5,000 lbs., 11-1/2" long
- BX88235 3" Rise/Drop, 10,000 lbs., 10-3/8" long
- BX88241 7" Rise/Drop, 10,000 lbs., 10-3/8" long

[Back to Contents Page](#)



Patriot 3 checks brake pressure to ensure proper setup.

# Patriot™ 3

## Dinghy Tow Brake

BRK2019



### Fast Setup.

Attach the brake claw, plug in the power cord, push the setup button, go.



### It's electric.

Electric, self-contained. Designed to make towing safe and easy.



### No tanks.

No tank to drain, no pumps or hoses to connect.



### In-cab controller.

Monitors the brake and allows manual input for braking response.



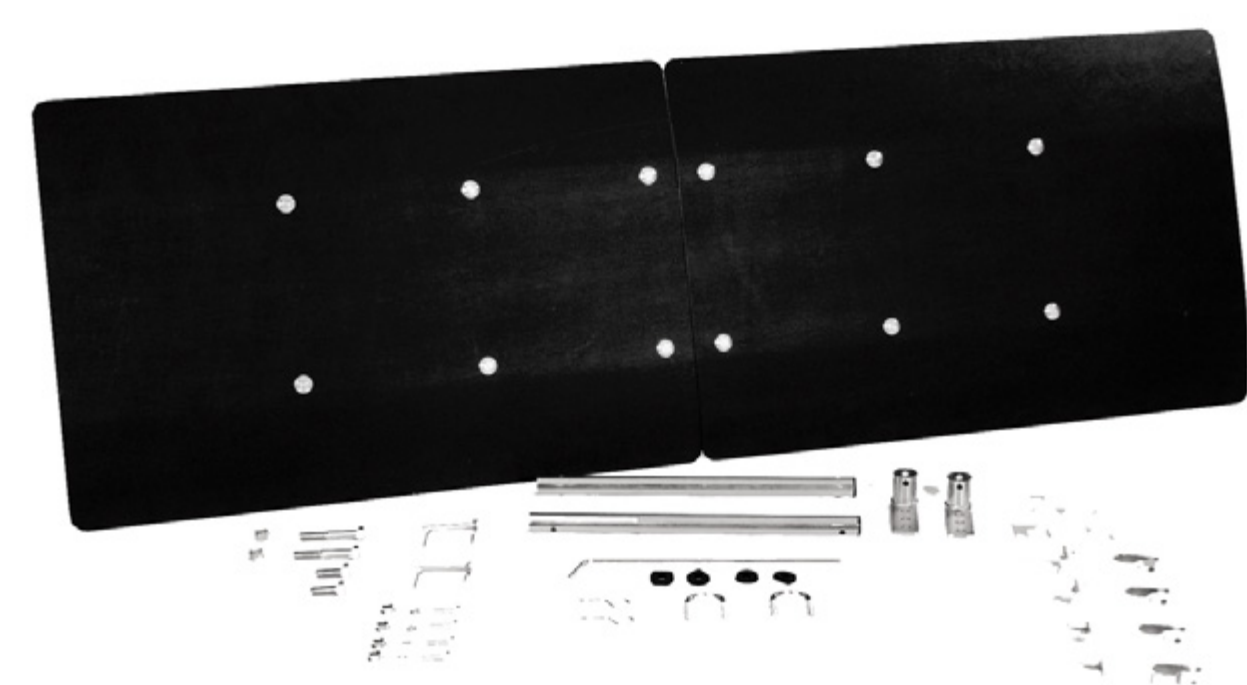
### Works with hybrids.

If you have a hybrid vehicle, Patriot 3 will get you on the road.

[Back to Contents Page](#)

## Flat Tow Accessories

### **BX8870** **KarGard Heavy Duty Deflector**



- Protects vehicle from road debris
- Easily folds for storage
- Aluminum mounting equipment
- Quick and easy installation
- All mounting hardware included

## Off-Road Bumper Adapters

Designed for use with Blue Ox Tow Bars equipped with standard triple lugs.



BX88357 Off Road Adapter Kit  
7/8" Pin.



BX88358 Off-road Adapter Kit  
1" Pin.



### Safety Cables

BX88196 7,500 lbs., 7 ft.

BX88197 10,000 lbs., 7 ft.



### Hitch Immobilizers

BX88224 2" Receiver

BX88225 2-1/2" Receiver

BX88312 2-1/2" to 2" Receiver



### Hitch Locks

BX8858 5/8" x 2" Rec. Class III-IV-V

BX8859 1/2" for Baseplate Class II

BX88359 1/2" x 3" Lock Class II Keyed alike

BX88212 5/8" x 4" for 2-1/2" Rec.

BX88101 3-Lock kit (1) 5/8" & (2) 1/2" for Baseplate 2" Rec.

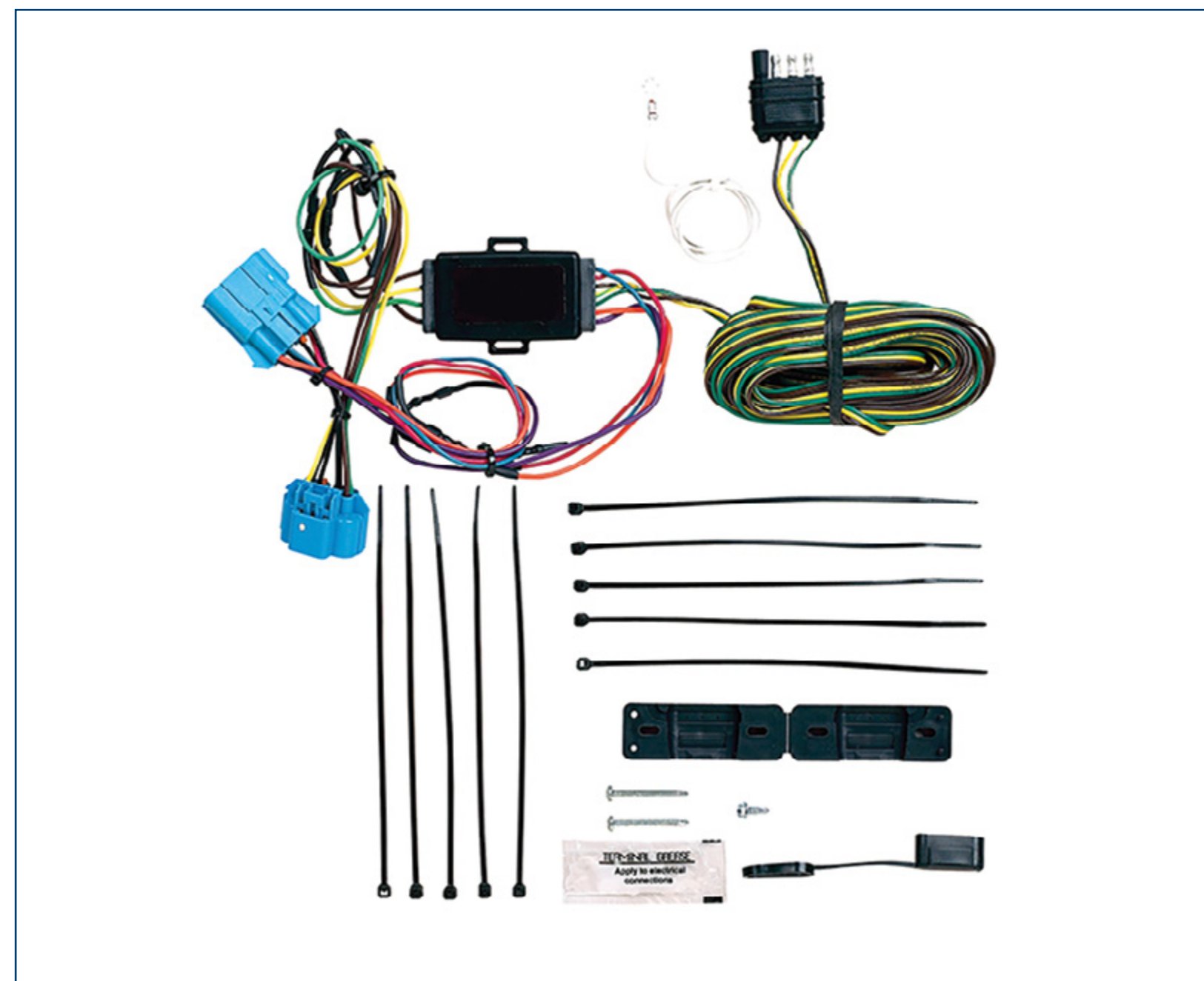
BX88177 4-Lock kit (2) 5/8" & (2) 1/2" for Baseplate 2" Rec.



[Back to Contents Page](#)

# Wiring Kits & Cables

## EZ Light Wiring Kits



Connect to the tow vehicle's electrical system in as little as 15 minutes.

Includes wiring for a towed vehicle's:

- Taillights
- Turn Signals
- Brake lights

### Popular Fits:

BX88366 Ford F-150 2015-2019

BX88368 Jeep Wrangler JL/Patriot/  
Gladiator 2018-2020

See application guide for correct vehicle fit.

## Coiled Electrical Cables

Eliminates accidental disconnects. Molded design: less wear and tear, protects wiring in all weather. Cables expand from 1' to 7'. Trailer plug sockets included. Wire connectors encased in silicone.

BX8861 4 wire

BX8862 6 wire

BX88206 7 to 6 wire

BX88254 7 to 4 wire



## 5th Wheel Wiring Harness

Designed to mount in the bed of the truck using the truck's factory wiring, allowing for easy hookup of a 5th wheel trailer.

Includes: 6' wire harness, 7 pole trailer socket, cable ties, and screws

BX88356

- Easy-Grip Lid opens 180° for easier connections
- Internal seals for maximum weather proofing
- Reinforced 90° angle
- Exact OEM fit



## Wiring Kits

BX8869 Bulb & Socket  
Taillight Wiring Kit

The bulb & socket kit does not tap into the vehicle's existing wiring. Fits most vehicles with clearance in taillight.

Operated by the towing vehicle.



BX8848 Diode Wiring Kit

Connects RV's tail, brake, and turn signal lights to towed vehicle's light system. Includes 26' long, 4-wire harness; 3 diodes; and detailed instructions.

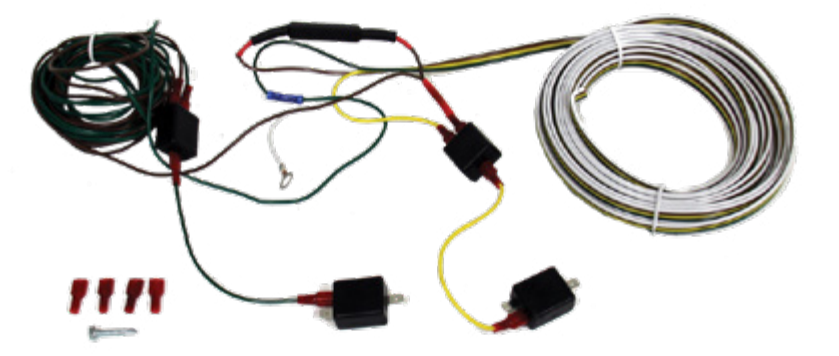
Diodes prevent electrical feedback.



BX88334 Diode Kit  
with 50 OHM Resistor

Connects brake, taillights, and turn signals.

In-line resistor on the wiring harness for vehicles with LED brake and running lights on the same wire.



BX88267 Red LED  
BX88269 Clear LED LED  
Taillight Wiring Kits

LED bulb & socket kits are brighter and smaller, allowing for ease of installation in compact taillight housings.

Does not tap into the vehicle's wiring. Operated by the towing vehicle.



[Back to Contents Page](#)



**Drive your ATV/UTV into the truck bed.**



**Mad-Ramps automatically flip up.**



**Tilt the ramps under the bumper guard, pull the locking lever to stow for towing.**

# **MAD-RAMPS™**

**Leave the trailer and go.**

- Easily reach places impossible to reach with a trailer
- Two ground-clearance settings for highway & off road
- Full LED lighting: Brake, turn, & marker lights
- Extra room for your gear in the truck bed
- DOT approved in all 50 states
- Connects and disconnects from your truck in 60 seconds

**Ask your BX sales representative how you can get a 10% rebate when you sell Mad-Ramps.**

[Back to Contents Page](#)

# Premiere Partners

One Free Display with any Qualified Premier Partner Purchase

Diamond	Platinum	Gold	Silver	Bronze
				
<b>Diamond</b>	<b>Platinum</b>	<b>Gold</b>	<b>Silver</b>	<b>Bronze</b>
Total Year Purchases <b>\$150,000</b>	Total Year Purchases <b>\$80,000</b>	Total Year Purchases <b>\$60,000</b>	Total Year Purchases <b>\$40,000</b>	Total Year Purchases <b>\$25,000</b>
Rebate <b>5%</b>	Rebate <b>4%</b>	Rebate <b>3%</b>	Rebate <b>2%</b>	Rebate <b>1%</b>
<b>End of Year Reward</b> 2 BX Coolers 2 BX Tumblers 5 Custom BX Polos	<b>End of Year Reward</b> 2 BX Coolers 2 BX Tumblers	<b>End of Year Reward</b> 1 BX Cooler 2 BX Tumblers	<b>End of Year Reward</b> 2 BX Tumblers	<b>End of Year Reward</b> 1 BX Tumbler

Rebate criteria is based upon total purchases from October 1, 2020 to September 30, 2021 from all distributors. Customer must purchase \$25,000 to qualify for rebates. Qualifying orders and rebates are "per store location".

[Back to Contents Page](#)



**BX Cooler**  
22 Qt. Big Frig



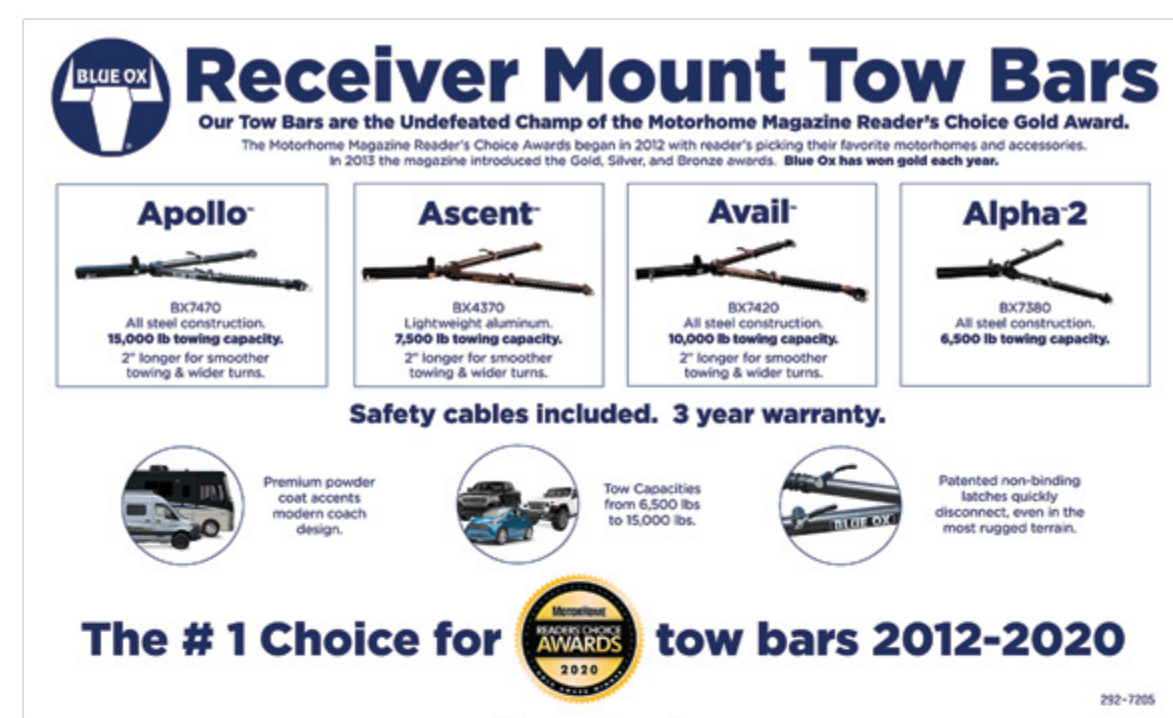
**BX Tumbler**  
30 Oz. Big Frig

# Displays

## DS-TB-Tower 2.5

Includes metal display stand, product sign, literature holders, and literature.  
Product not included.

Sign Part No. 292-7205



## DS-WD Hitch

Includes display stand.  
Product not included.



## DS-WD Hitch Stacked SwayPro/TrackPro

Includes display stand. Product not included.



QR Codes on WD display product labels deliver customer to a website for additional product information.



SwayPro QR Code



TrackPro QR Code

[Back to Contents Page](#)

# North American Sales Team

**Alex Walker, Director of Sales**  
Office: 402-385-2868  
Cell: 712-389-1524  
alexwalker@blueox.com

**Rick Kauer, Product & Training Manager**  
Office: 402-385-2869  
Cell: 712-389-8514  
rickkauer@blueox.com

**Linda Sabatini, Inside Sales**  
Office: 402-385-2869  
Cell: 402-922-0205  
lindasabatini@blueox.com

**Britton Wall, National Account Manager**  
Cell: 712-253-6028  
brittonwall@blueox.com

**Roxanne Simonsen, Customer Care Sales Administrator**  
Office: 402-385-2852  
roxannesimonsen@blueox.com

## United States



**Charlie Lockwood**  
**Regional Manager East Coast**  
603-490-5580  
charlielockwood@blueox.com

**Customer Care Representative**  
Leslie Mauseth, 402-922-5006  
lesliemauseth@blueox.com



**Curtis Carpenter**  
**Regional Manager East Central**  
712-389-1758  
curtiscarpenter@blueox.com

**Customer Care Representative**  
Steve Denker, 402-922-5003  
stevedenker@blueox.com



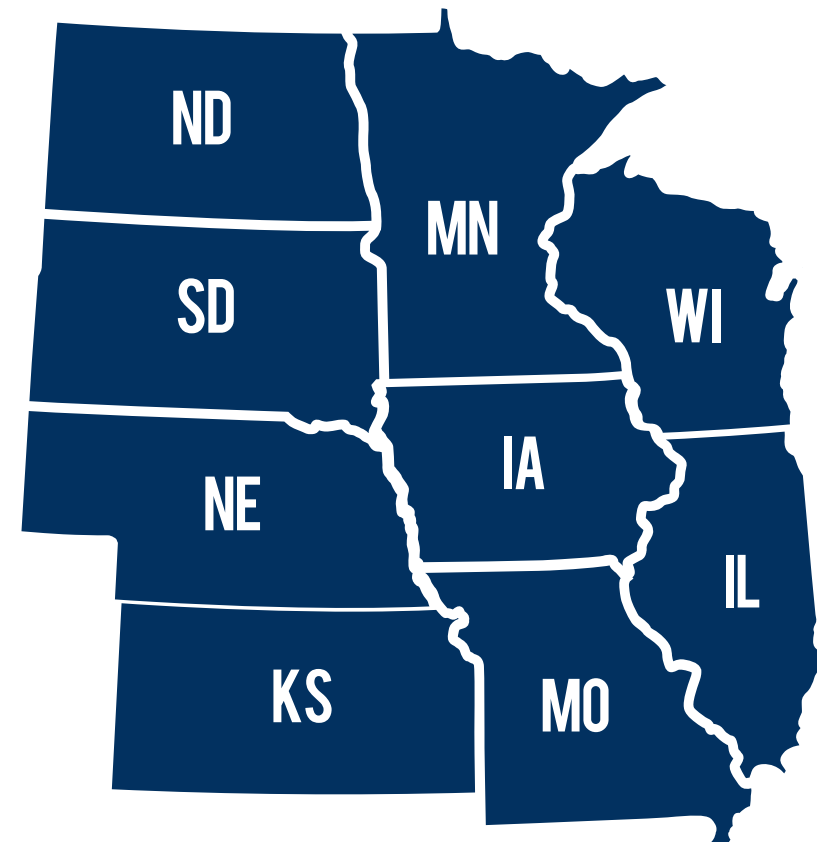
**Britton Wall**  
**National Account Manager**  
712-253-6028  
brittonwall@blueox.com

**Customer Care Representative**  
Chad Luber, 402-385-2851  
chadluber@blueox.com

## Canada

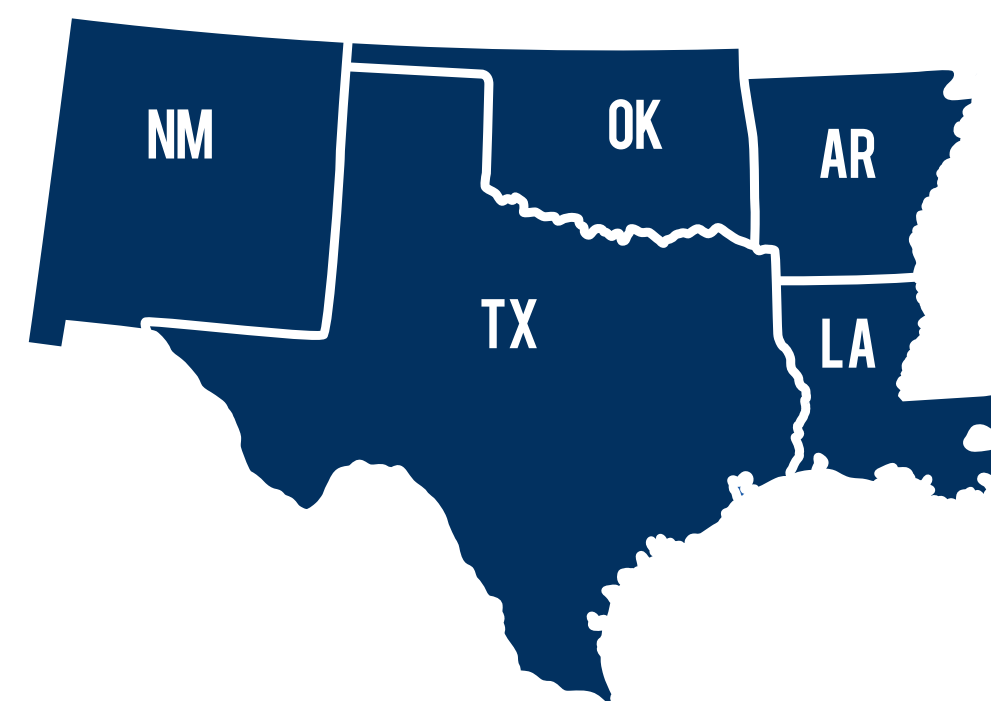


**Sean Carrigan**  
403-483-0763  
seancarrigan@blueox.com  
**Customer Care Representative**  
Connor Fillipi, 402-385-2850  
connorfillipi@blueox.com



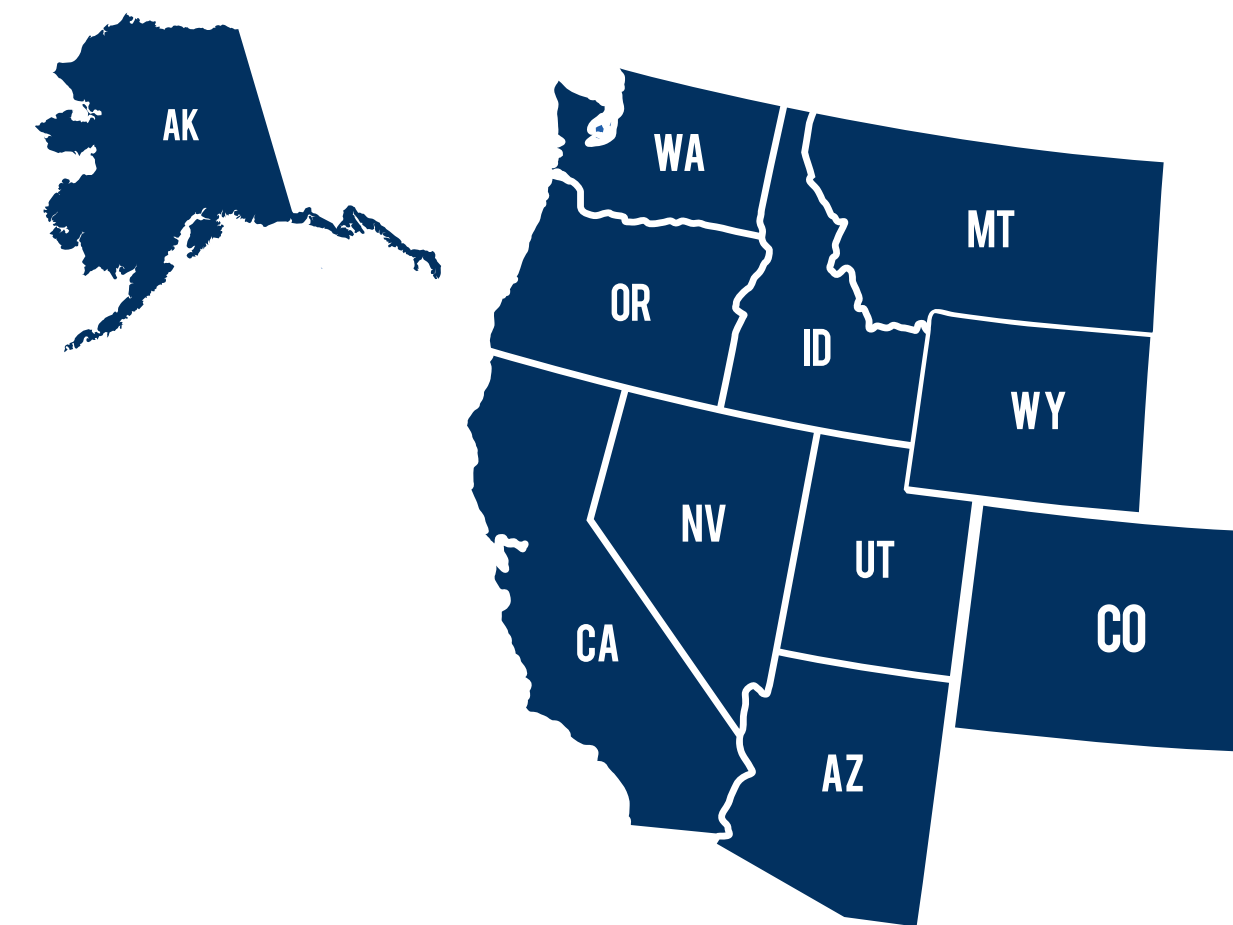
**Open**  
**Contact Linda Sabatini**  
402-385-2869  
lindasabatini@blueox.com

**Customer Care Representative**  
Connor Fillipi, 402-385-2850  
connorfillipi@blueox.com



**Jeff Stickfort**  
**Regional Manager South Central**  
402-922-0970  
Jeffstickfort@blueox.com

**Customer Care Representative**  
Roxanne Simonsen, 402-385-2852  
roxannesimonsen@blueox.com



**Chad Cole**  
**Regional Manager West Coast**  
402-922-2690  
chadcole@blueox.com

**Customer Care Representative**  
Rebekah Kampfe, 402-385-2853  
rebekahkampfe@blueox.com

[Back to Contents Page](#)

# Weight Distribution

## SwayPro

BXW0350	HITCH, SWAYPRO, 350 LB, CLAMP
BXW0550	HITCH, SWAYPRO, 550 LB, CLAMP
BXW0750	HITCH, SWAYPRO, 750 LB, CLAMP
BXW0750-S	HITCH, SWAYPRO, 750LB, 9-9 RCVR HITCH
BXW1000	HITCH, SWAYPRO, 1000 LB, CLAMP
BXW1000-S	HITCH, SWAYPRO, 1000LB, 9-9 RCVR HITCH
BXW1500	HITCH, SWAYPRO, 1500 LB, CLAMP
BXW1500-S	HITCH, SWAYPRO, 1500LB, 9-9 RCVR HITCH
BXW2000	HITCH, SWAYPRO, 2000 LB, CLAMP

## Swaypro Accessories

BXW4029	WRENCH, SWAYPRO, HEAT TREATED, ZP
BXW4023	POLE TONGUE ADAPTER
BXW4000	RECEIVER HITCH MOUNT, 7 H - 9 IN
BXW4002	RECEIVER HITCH MOUNT, 9 H - 9 IN
BXW4022	RECEIVER HITCH MOUNT, 11H-10IN
BXW4028	RECEIVER HITCH MOUNT, 2 1/2" 9 HOLE
BXW4015	KIT, SPRING BARS, 350 LBS
BXW4005	KIT, SPRING BARS, 550 LBS
BXW4006	KIT, SPRING BARS, 750 LBS
BXW4007	KIT, SPRING BARS, 1000 LBS
BXW4008	KIT, SPRING BARS, 1500 LBS
BXW4014	KIT, SPRING BARS, 2000 LBS
BXW4010	KIT, SIGNATURE SERIES LATCH, CLAMP
BXW4021	KIT, SIGNATURE SERIES LATCH, BOLT ARD/THRU
BXW4027	KIT, 8" FRAME, ROTATING LATCH
BXW4011	KIT, HITCH HEAD
BXW4012	KIT, HITCH HEAD, UNDERSLUNG

## TrackPro

BXW0650	HITCH, TRACK PRO, 650 LB (2" BALL)
BXW0850	HITCH, TRACK PRO, 850 LB
BXW0851	HITCH, TRACK PRO, 800 LB, 9 HOLE SHANK
BXW1050	HITCH, TRACK PRO, 1000 LB
BXW1051	HITCH, TRACK PRO, 1000 LB, 9 HOLE SHANK
BXW1350	HITCH, TRACK PRO, 1300 LB
BXW1351	HITCH, TRACK PRO, 1000 LB, 9 HOLE SHANK
BXW0853	HITCH, TRACK PRO 800 LB JAYCO
BXW1053	HITCH, TRACK PRO 1000 LB JAYCO
BXW1353	HITCH, TRACK PRO 1300 LB JAYCO

## TrackPro Accessories

BXW4036	KIT, 7 HOLE SHANK, TRACK PRO
BXW4037	KIT, 9 HOLE SHANK, TRACK PRO
BXW4038	KIT, 11 HOLE SHANK, TRACK PRO
BXW4039	KIT, 2 1/2" X 9 HOLE SHANK, TRACK PRO
BXW4040	KIT, SPRING BARS, 800 LB. TRACK PRO
BXW4041	KIT, SPRING BARS, 1000 LB. TRACK PRO
BXW4042	KIT, SPRING BARS, 1300 LB. TRACK PRO
BXW4043	KIT, TRACK PRO, SPRING BAR LIFT TOOL
BXW4044	KIT, TRACK PRO, L BRKT, (PAIR)
BXW4045	KIT, TRACK PRO, L BRACKET, DS
BXW4046	KIT, TRACK PRO, L BRACKET, PS
BXW4047	KIT, PINS, TRACK PRO
BXW4048	KIT, TRACK PRO, HITCH HEAD
BXW4049	HITCH BALL, TRACK PRO, 2 5/16" X 13K, CHROME

## 2-Point WD Hitch

BXW0675	HITCH, RD BAR WD HITCH, 600 LB
BXW0875	HITCH, RD BAR WD HITCH, 800 LB
BXW1275	HITCH, RD BAR WD HITCH, 1200 LB

[Back to Contents Page](#)

# 5th Wheel & Hitch Accessories

## 5th Wheel

- BXR6200 SUPER RIDE, 20K, GN MOUNT
- BXR7200 SUPER RIDE, 20K, ISR MOUNT

## Accessories

### Locks

- BX88351 TRLR LOCK COUPLER, UNIVERSAL
- BX88360 KINGPIN LOCK
- BX8859 RECEIVER LOCK, 1/2 - CLASS II, 1 1/4 X 1 1/4 RCVRS
- BX8858 RECEIVER LOCK, 5/8 - CLASS III & IV & V
- BX88212 RCVR. LOCK, 5/8 - 4 CLASS V
- BX88359 RECEIVER LOCKS (2) 1/2"
- BX88101 RECEIVER LOCKS (3), 2-1/2, 1-5/8
- BX88177 RECEIVER LOCKS (4), 2-1/2, 2-5/8
- BX88187 RECEIVER, REDUCER, 2 1/2 - 2

[Back to Contents Page](#)

## Hitch Immobilizers

- BX88224 IMMOBILIZER II, 2" REC HITCH
- BX88225 IMMOBILIZER II, 2.5" REC HITCH
- BX88312 IMMOBILIZER III, 2 1/2 TO 2 REC HITCH

# Flat Towing

## Tow Bars

BX4370	TOWBAR, ASCENT
BX4375	TOWBAR, ASCENT, 2.5" RCVR
BX7380	TOWBAR, ALPHA 2
BX7420	TOWBAR, AVAIL
BX7425	TOWBAR, AVAIL W/ 2 1/2" RCVR
BX7470	TOWBAR, APOLLO

## Tow Bar Accessories

BX88363	KIT, TOW ACC BX7470
BX88308	KIT, TOW ACC. BX7420
BX88231	KIT, TOWING ACC, LX SERIES, 7 TO 6
BX88229	KIT, TOWING ACC., LX SERIES, 6 WIRE
BX88309	TOW BAR, COVER, AVAIL/ASCENT
BX8875	TOW BAR, COVER, MH MOUNTED
BX88134	BAG, VINYL TAB/COIL CABLE
BX88219	KIT, 1/2" PIN, RETAINING
BX88197	KIT, SAFETY CABLES, 10000LB, 7 FT
BX88362	KIT, SAFETY CABLES, 15000 7FT
BX88196	KIT, SAFETY CABLES, 7500LB, 7 FT

## Protective Equipment

BX8870	KARGARD
--------	---------

## Braking

BRK2019	BRAKE SYSTEM, PATRIOT 3
---------	-------------------------

## Braking Accessories

BRK2502	BRAKE ROD EXTENSION
BRK2503	SEAT STIFFENER
BRK2505	BREAKAWAY SWITCH BRK2010/2012
BRK2506	PROTECTIVE BAG, PATRIOT
BRK2512	BRAKE CLAW, ADJUSTABLE/LOCKING BRK2012
BRK2514	BRAKE CLAW, FIAT 500

## Adapters

BX88358	AFTER MARKET BUMPER ADAPTER, 1"
BX88357	AFTER MARKET BUMPER ADAPTER, 7/8"

## Hitch Immobilizers

BX88224	IMMOBILIZER II, 2" REC HITCH
BX88225	IMMOBILIZER II, 2.5" REC HITCH
BX88312	IMMOBILIZER III, 2 1/2 TO 2 REC HITCH

## Drop Receivers/Receiver Extensions

BX88132	DROP RECEIVER, 10 IN, 5000 LB. CAP
BX88128	DROP RECEIVER, 2 IN, 5000 LB. CAP
BX88235	DROP RECEIVER, 3 IN DROP, SHORT
BX88129	DROP RECEIVER, 4 IN, 5000 LB. CAP
BX88130	DROP RECEIVER, 6 IN, 5000 LB. CAP
BX88241	DROP RECEIVER, 7 IN DROP, SHORT
BX88131	DROP RECEIVER, 8 IN, 5000 LB. CAP
BX88264	RECEIVER EXTENSION, 12"
BX88265	RECEIVER EXTENSION, 6"

[Back to Contents Page](#)

# Flat Towing Wiring

## Coiled Cables

- BX8861 4 WIRE COILED CABLE EXT.6 FT USEABL
- BX8862 6 WIRE COILED CABLE EXT.6 FT
- BX88254 7 TO 4 COILED CABLE
- BX88206 7 TO 6 COILED CABLE

## Wiring Kits

EZ Light Wiring Harness Refer to Fit Guide at [blueox.com](http://blueox.com)

Fuse Bypass Switches Refer to Fit Guide at [blueox.com](http://blueox.com)

- BX88356 KIT, 5TH WHEEL WIRING HARNESS 6' LONG
- BX8864 6 AMP DIODE SINGLE PACK
- BX88159 6 AMP DIODE, 12 PACK
- BX8863 9 TERMINAL DIODE BLOCK PACK
- BX88184 BULB AND SOCKET, PACK OF 10 EACH
- BX88270 LED BULB, CLEAR, 10 PACK
- BX88268 LED BULB, RED, 10 PACK
- BX8869 TAIL LIGHT WIRING KIT, BULB & SOCKT
- BX88269 TAIL LIGHT WIRING KIT, CLEAR LED
- BX8811 TAIL LIGHT WIRING KIT, DIODE BLOCK
- BX88267 TAIL LIGHT WIRING KIT, RED LED BULB
- BX8848 WIRE KIT, 4 DIODES
- BX88334 WIRING KIT 4 DIODE WITH 50OHM RESISTOR

[Back to Contents Page](#)